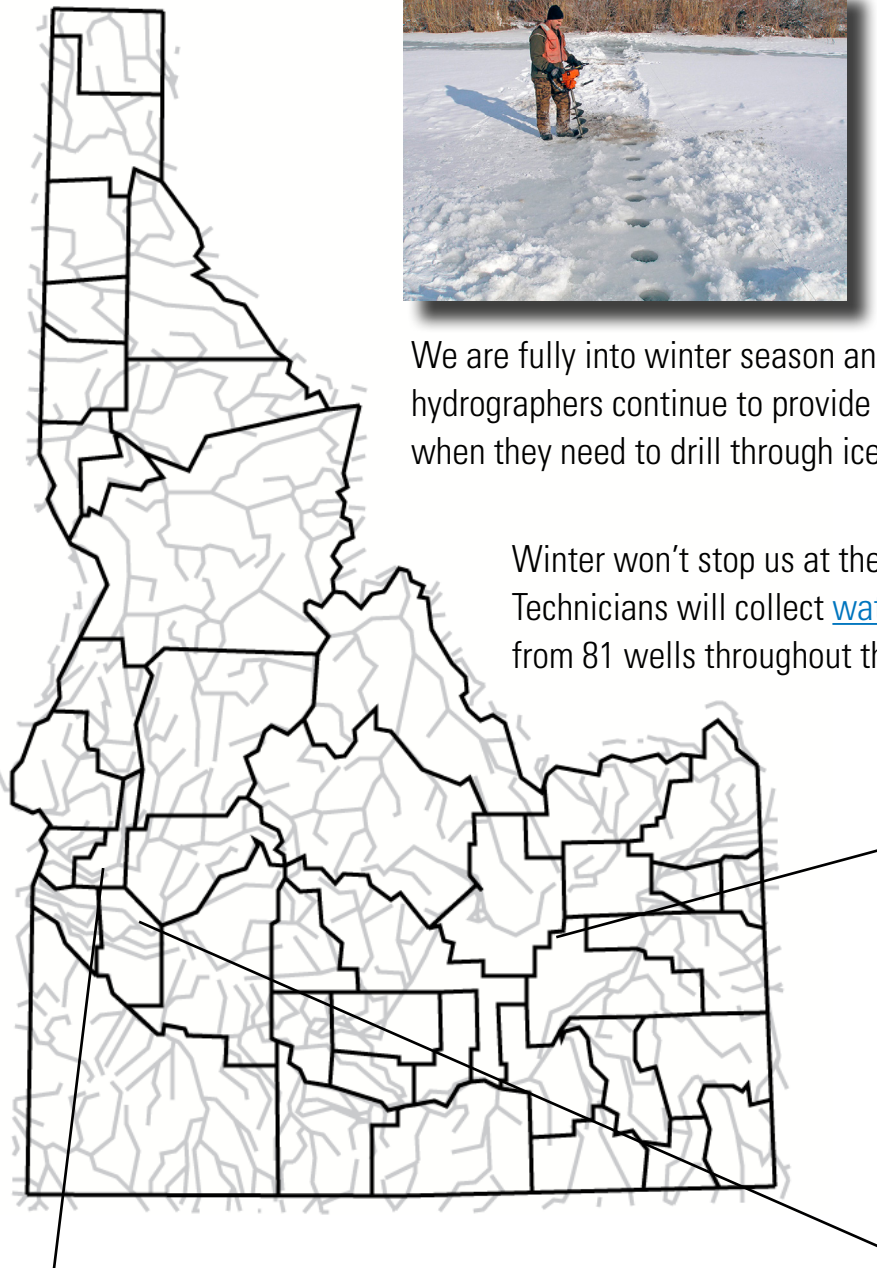


Idaho Hydrologic Update for January 2017



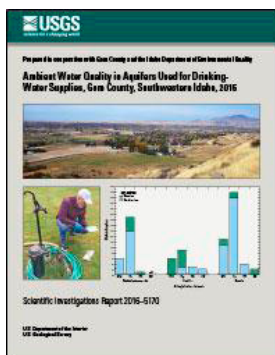
We are fully into winter season and all of its challenges. Even so, our hydrographers continue to provide uninterrupted stream data, even when they need to drill through ice to collect it.

Winter won't stop us at the Idaho National Laboratory, either. Technicians will collect [water-level measurements](#) this month from 81 wells throughout the 890 square-mile site.



The Idaho Department of Environmental Quality will host its [27th Annual Water Quality Workshop](#) January 31 through February 2 at Boise State University. Several USGS scientists from our center and others will present their research. See other side for details.

[More >](#)



We published the results of our groundwater quality assessment in Gem County, conducted in cooperation with the county and the Idaho Department of Environmental Quality. You can [read a summary of results and download the report](#).

USGS at the 27th Annual Idaho Water Quality Workshop



Michelle Hladik
Tuesday, 1:10 p.m.
Changing Pesticide Use: Challenges for Water-Quality Monitoring and Ecological Implications



Dorene MacCoy
Wednesday, 4:35 p.m.
Aquatic Biological Communities and Associated Habitats at Selected Sites in the Big Wood River Watershed, 2014



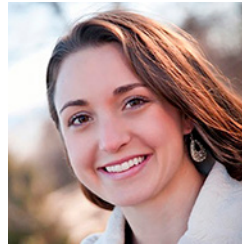
Daniel Wise
Wednesday, 10:45 a.m.
Estimating Phosphorus Delivery to Streams and Waterbodies in Idaho Using the USGS Sparrow Model



Austin Baldwin
Thursday, 8:35 a.m.
Mercury in the Hells Canyon Reservoir Complex



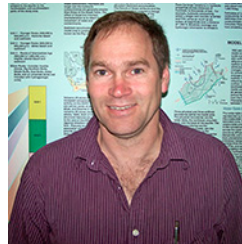
Matthew Laramie
Wednesday, 1:45 p.m.
eDNA Monitoring of Bull Trout and Rainbow Trout Seasonal Distributions in the Bruneau-Jarbirdge Rivers Wilderness



Candice Hopkins
Thursday, 10:15 a.m.
Ambient Water Quality in Aquifers Used for Drinking Water Supplies, Gem County, Idaho



Molly Wood
Wednesday, 2:35 p.m.
National Innovations in Sediment Monitoring



Roy Bartholomay
Thursday, 10:40 a.m.
Evaluating Background Concentrations of Selected Chemical and Radiochemical Constituents From the Eastern Snake River Plain Aquifer



Kyle Blasch
Wednesday, 3:50 p.m.
Perennial / Non-Perennial Stream Identification Web Application



Gordon Rattray
Thursday, 11:05 a.m.
Multi-Tracer Evidence of Water Sources and Geochemical Processes in the Eastern Snake River Plain Aquifer, Idaho National Laboratory

[USGS Idaho Water Science Center](#)

208.387.1300

Director: Dr. Kyle Blasch

Deputy Director: Christian Schmidt

Assistant Director: Dave Evetts

Public Information Officer: Tim Merrick

