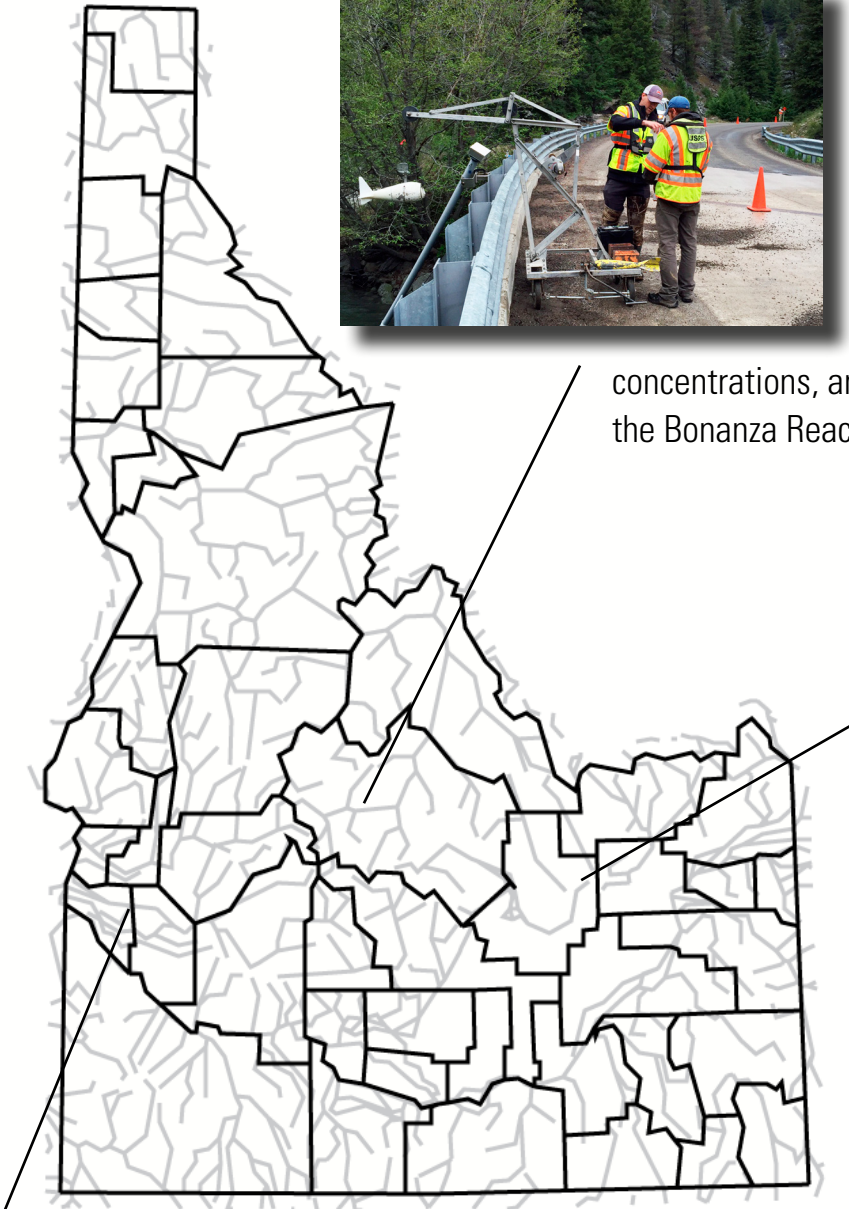
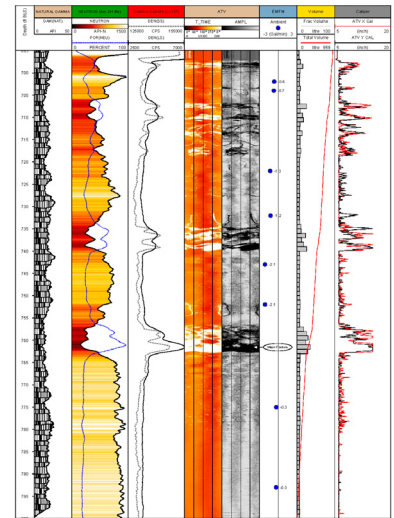


# Idaho Hydrologic Update for June 2016



The Bureau of Reclamation and the Shoshone-Bannock Tribes are [working to build and improve habitat](#) for spring and summer Chinook salmon and steelhead in the Yankee Fork of the Salmon River. They asked us to monitor stream discharge, sediment concentrations, and sediment load at three sites in the Bonanza Reach of the Yankee Fork.



This summer, we will install a dozen new streamgages to collect data for developing a



[Treasure Valley groundwater model](#) in cooperation with the Idaho Department of Water Resources.

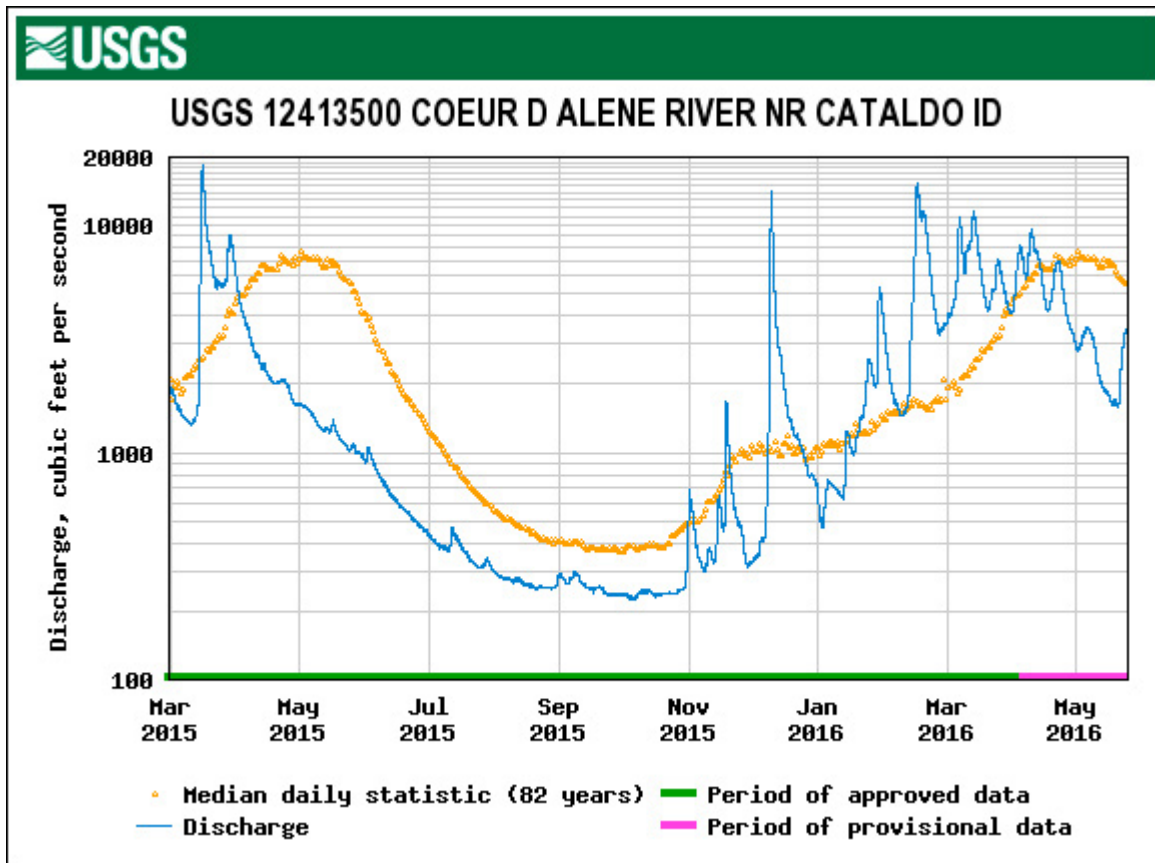
a new [acoustic televiewer \(ATV\)](#) to learn more about how groundwater moves in the eastern Snake River Plain aquifer. The ATV emits ultrasound pulses to create an image of research boreholes drilled into the aquifer. Those images help our scientists to determine the character, relation, and orientation of lithologic and structural planar features of the aquifer.

Our scientists at the Idaho National Laboratory are using

[More >](#)

### What's Ahead This Summer for Northern Idaho Rivers?

Last summer, streamflows in the [upper Spokane River basin](#) neared all-time record lows. A heavy winter rainstorm in December spiked flows to flood stage,, and a near-normal snowpack boosted flows through early spring. However, most of that snow melted and ran off during an unusually warm April. Physical streamflow measurements collected in mid-May by our Post Falls Field Office hydrographers were about 25 percent of the long-term median.



USGS Idaho Water Science Center  
 208.387.1300  
 Director: Dr. Kyle Blasch  
 Associate Director: Greg Clark  
 Assistant Director: Dave Evetts  
 Public Information Officer: Tim Merrick